

MANUALE CONFIGURAZIONE X-Lite 3.0

1) Scaricare il software al seguente indirizzo: <http://www.counterpath.com/index.php?menu=download>



The screenshot shows the CounterPath website's download page. At the top left is the CounterPath logo. To the right, there is a promotion for 'eyeBeam 1.5 Buy it now!' with icons for Windows and Apple. Below this is a navigation bar with links: Solutions, Products, Support, Media Center, Company, Investors, and Contact Us. The main content area features the heading 'Download X-Lite for FREE!' followed by a list of download links: 'X-Lite 3.0 (based on eyeBeam 1.5) is now available for Windows and Mac!', 'X-Lite v3.0 for Windows [.exe]' with a Windows icon, 'X-Lite v3.0 for MAC OS X [.dmg]' with an Apple icon, and 'X-Lite v2.0 for Linux [.tar.gz]' with a Linux icon. Below the links, there is text stating 'The Quick Start Guide and User Manual can be found here.' and 'To get more help, register in our Support Forum.' The footer contains 'Privacy Policy', 'Terms of Use', 'Site Map', and a copyright notice: '© 2007 CounterPath Solutions, Inc. All rights reserved.'

Fig.1

2) Installare il software appena scaricato;



Fig.2

3) Al primo avvio del software, apparirà questa schermata. Clicca sul pulsante "ADD" e inserisci i tuoi dati di configurazione come indicato nella figura 4.

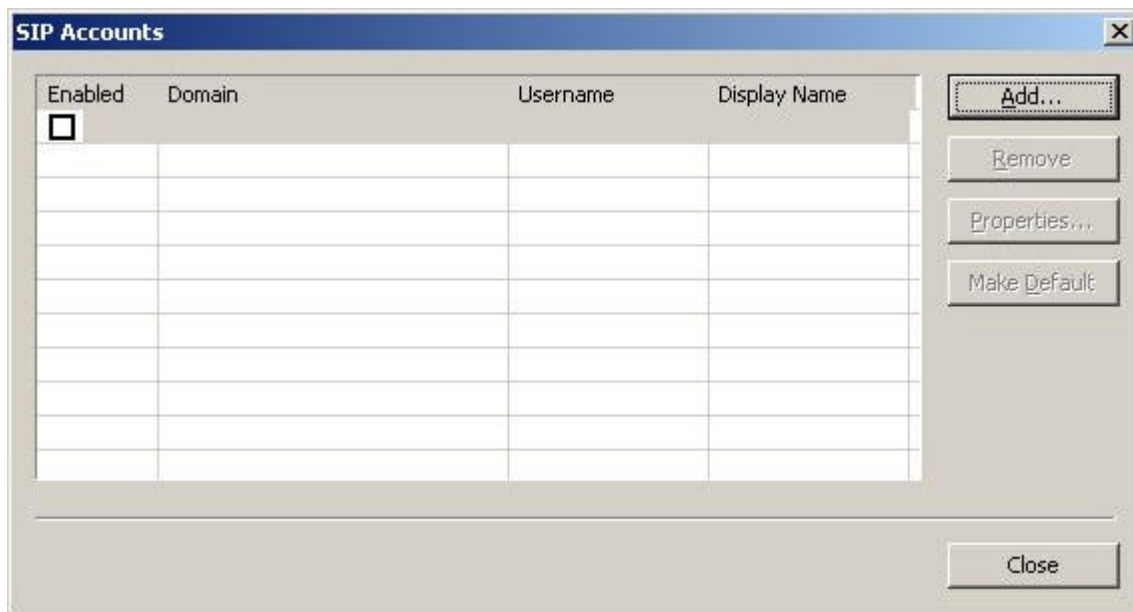


Fig.3

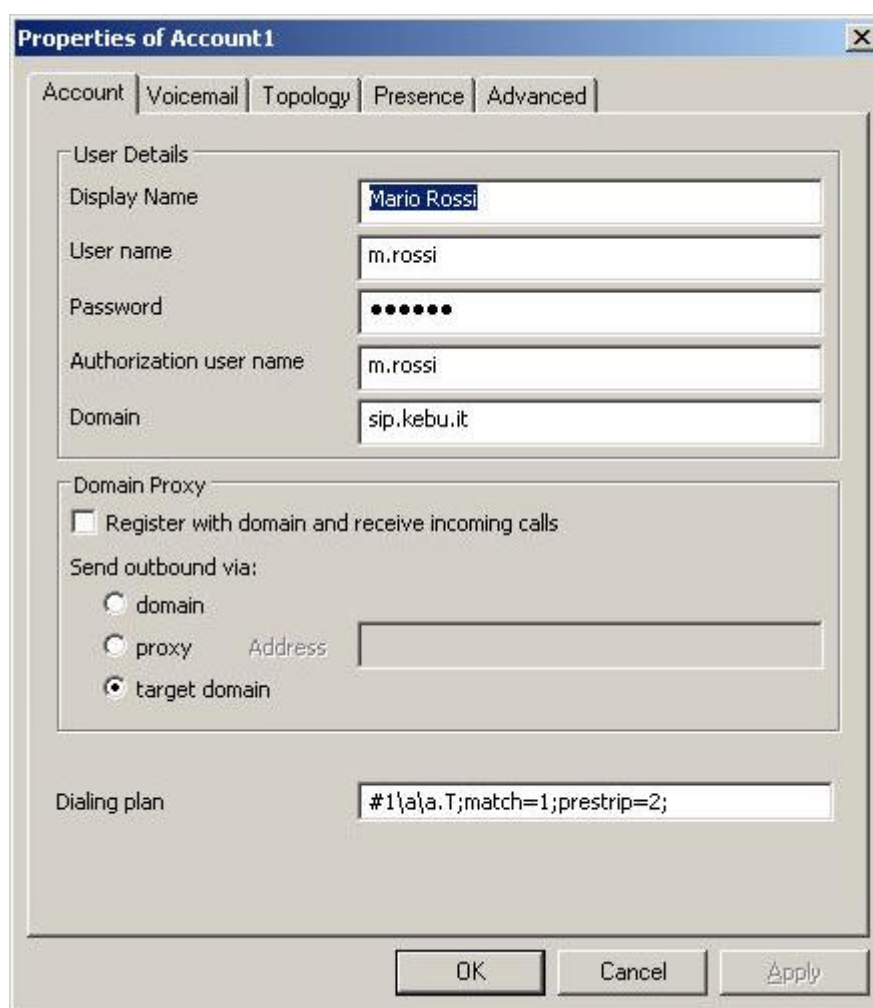


Fig.4